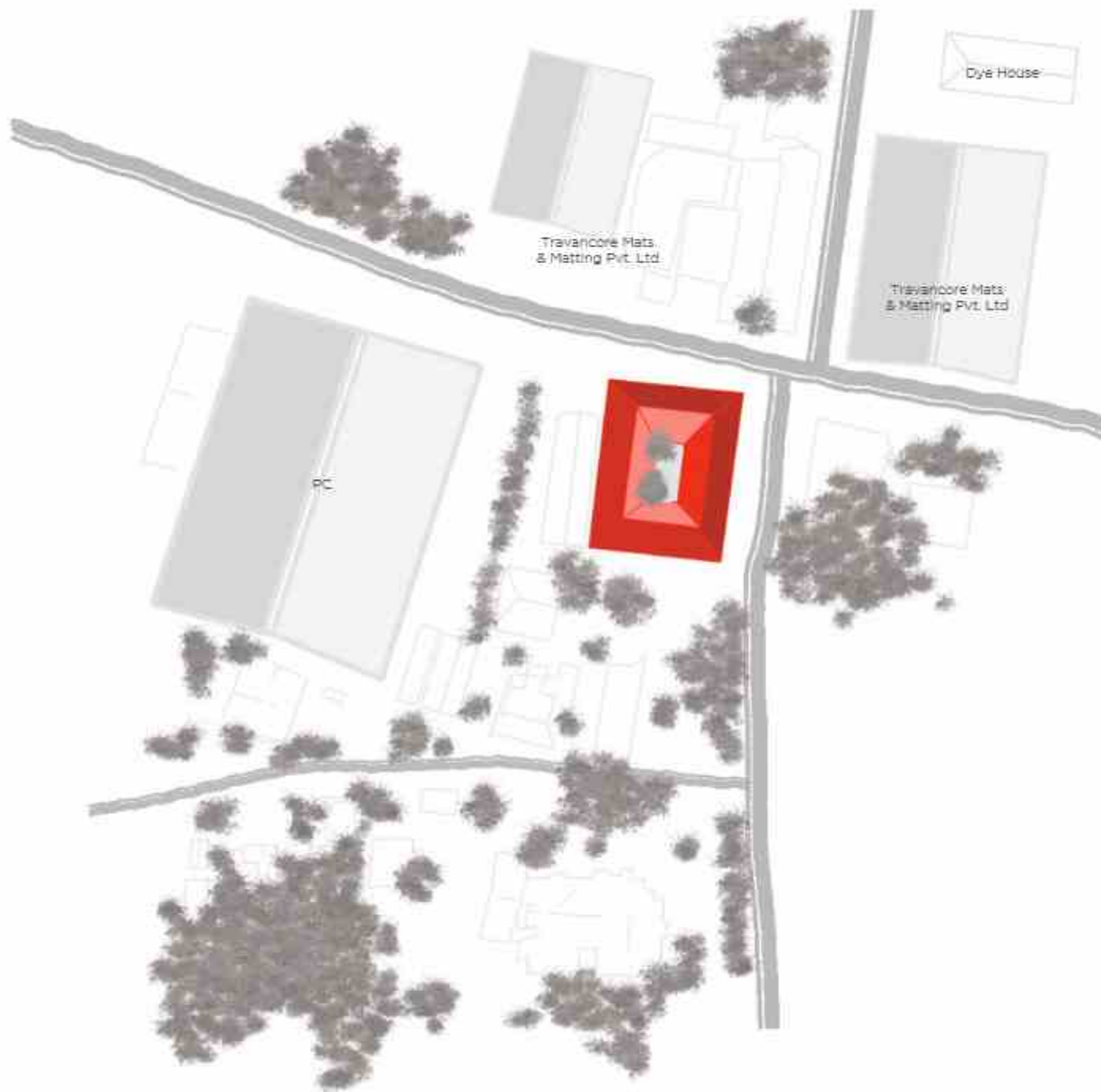




Neytt homes



CONTENTS

ABOUT US	04
PROJECTS	28
WEAVING TECHNIQUES	39
MATERIALS	49
DESIGNER COLLABORATIONS	51
INHOUSE COLLECTIONS	99

ABOUT US

Neytt, the destination for contemporary chic and timeless class in the realm of rugs and carpets, is on a mission to redefine premium floor coverings. Our creations are effortless blends of heritage and modernism. Made mostly by hand, these rugs are the finest specimen of authentic, age-old craftsmanship. By using exotic raw materials like silk, sisal, seagrass, water hyacinth, lyocell, bamboo silk, linen, and recycled PET, Neytt offers tailored sizes, shapes, designs, and borders as per client's specifications.



Technique : Jacquard weave

Collection: Killivaethil
Material: Sisal

A 100 YEAR OLD LEGACY

Based out of Kerala, India- Neytt, founded by Sivan Santhosh and Nimisha Srinivas, is a recent phenomenon. It is backed by a rich heritage of carpeting that began more than a century ago with his grandfather. In 1917, K. Velayudhan set up the Travancore Mats and Matting company, which grew into a massive venture exporting niche rugs and carpets all over the world. When the millennium hit, Velayudhan Santosh founded Extraweave Pvt Ltd. It has enjoyed two decades of carpeting history and has carved a niche place for itself in the market.

Neytt, our latest brainchild, is a high-fashion luxury brand that crafts bespoke rugs and carpets. Not only does the venture work with custom sizes, shapes, designs, and borders but also goes above and beyond, experimenting with exotic materials. By collaborating with avant-garde artists from across the world, Neytt is looking to revolutionize the way interior designers approach luxury floor and wall coverings.



FOUNDERS OF NEYTT

Sivan Santhosh and Nimisha Srinivas

1917

Journey begins in the town of Alleppey, The Venice of the East.

1930

Manufacturing gets shifted to the town of Cherthala.

1977

Receives Presidential Award for the Highest Export of Coir floor coverings for 11 subsequent years.

2000

Extraweave was established.

2012

Supplied rug to the White House for an event.

2021

Extraweave establishes The Rug Atelier and The Rug Atelier establishes Neytt.

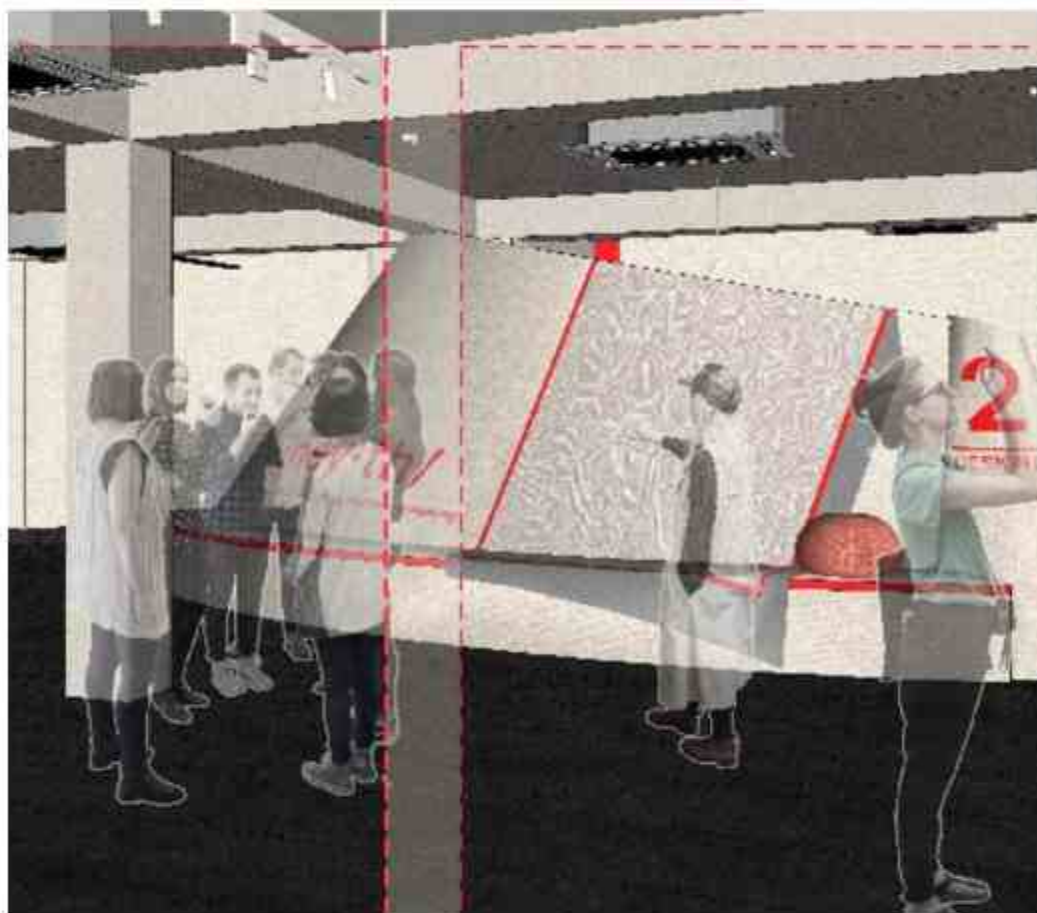
FLAGSHIP STORE

Our store was envisioned not as a traditional retail space, but as an evolving gallery. Here each rug isn't just displayed, it's revealed. The space invites slow discovery. Rugs don't shout for attention all at once; they emerge gradually, like stories waiting to be uncovered. You don't just look you move, pause, and feel. Each corner holds something unexpected.

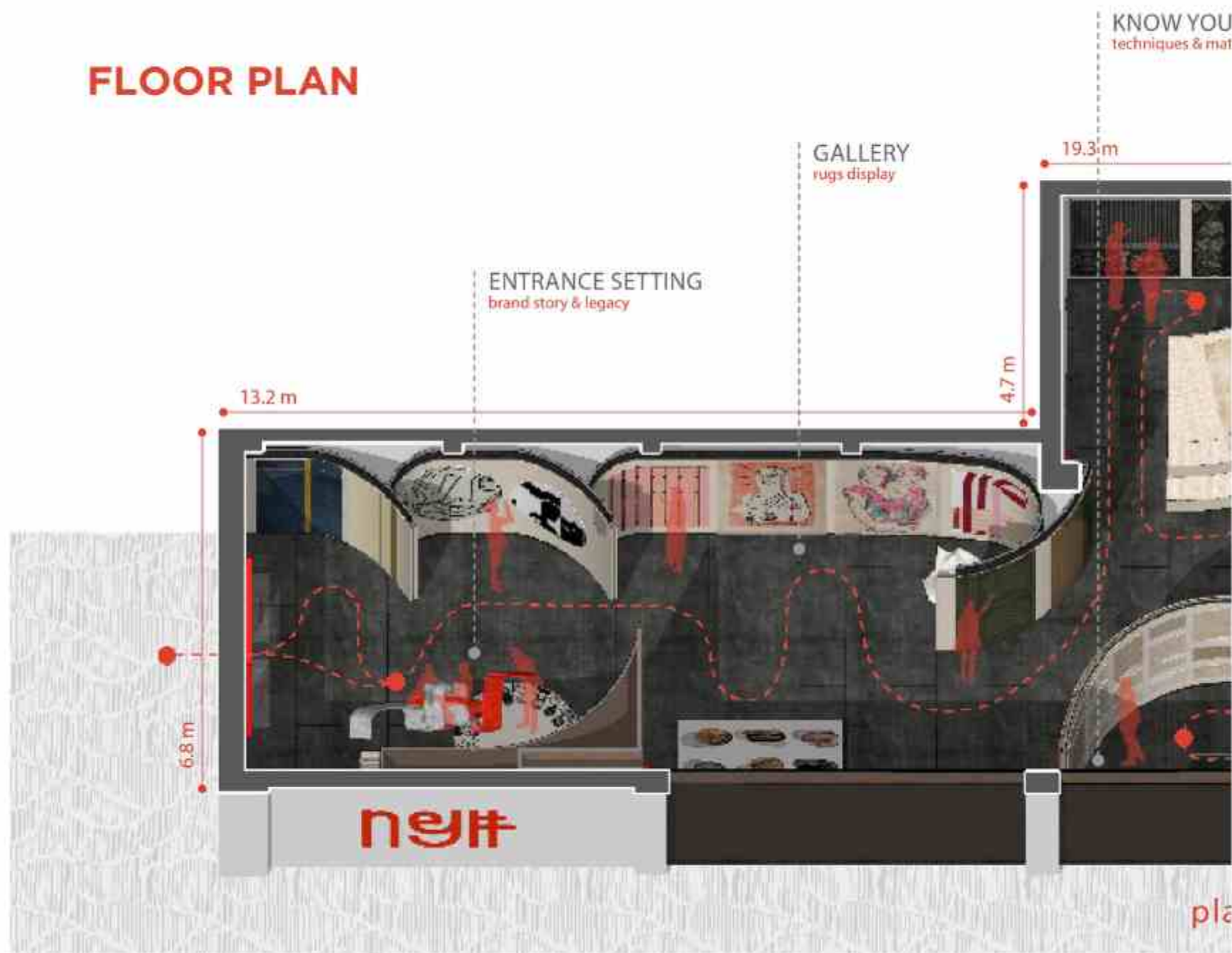
We created "mounds" which are soft, sculptural forms draped in rugs where you can sit, lie down, or simply linger. These aren't just seating areas; they're places to connect with the texture, color, and craftsmanship of our work up close.

As you walk through the store, the layout unfolds in layers of anticipation. Light, materiality, and form are used deliberately guiding you not just through a space, but through a narrative. It's a space that mirrors the process of understanding a rug: slow, detailed, and personal.

This isn't just a flagship. It's an immersive journey through the worlds of art, design, and storytelling where rugs become more than objects. They become experiences.



FLOOR PLAN



R RUG
series of rugs

CENTRAL SPACE
for events and launches

DESIGN LAB
design consultation &
customisation for rugs

SERVICE SPACES
staff toilet, pantry,
storage

PUBLICATIONS
awards & publications
won by the brand

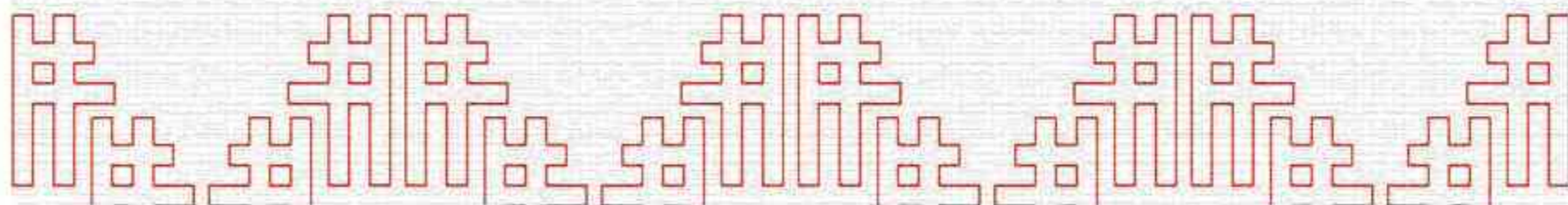


11.5 m

in

MISSION

Redefine the world of luxury rugs by seamlessly blending sustainability, exquisite design, and rich heritage.

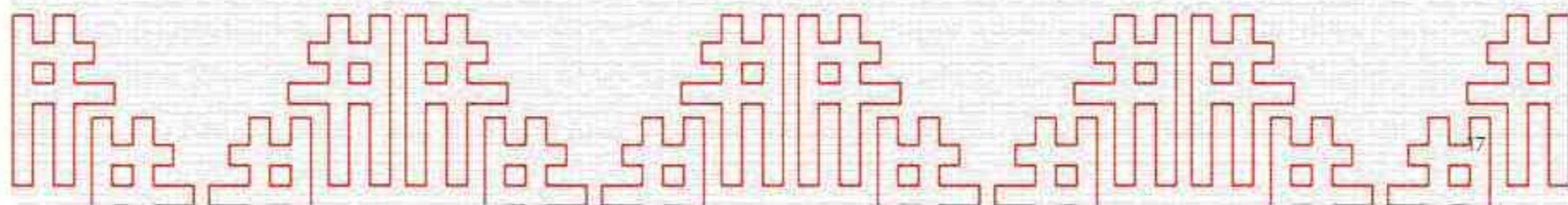


VISION

By embracing innovative techniques and responsible sourcing, we aim to minimize our ecological footprint and contribute to a more sustainable future for generations to come.

To be accessible by all for all things home decor. To create a strong and accessible community pertaining to architects, designers and interior designers.

We aim to cater to customers all over by expanding the brand and its ethos to multiple destinations.



OUR COMMITMENT TO SUSTAINABILITY

Neytt believes in giving back to nature. Our products are very much in sync with the brand's ethos of sustainability. We believe in building a better tomorrow and that is why our products are made using natural materials. They are not for one-time use but are durable enough to last few years. Even after that, their eco-friendly properties make them perfect for recycling so that you can also give back to nature in time. Not only the rugs and carpets, but our entire process is tailored to be eco-conscious.



Extraweave Pvt Ltd. (EWPL) was established in the year 2000. We have a vertically integrated state-of-the-art manufacturing facility with spinning equipment imported from Ireland, dyeing machines from Italy, coating machines from the USA, and weaving and finishing machines from Belgium. A fine blend of technological advantage, superior quality, and design innovations has made EWPL a preferred supplier for buyers across the globe.

EWPL strictly complies with all statutory and social compliance standards as per international norms and undergoes regular audits by international agencies. With over 100 years of expertise in carpet manufacturing through our parent company, Travancore Mats and Matting Company, established in the year 1917, we ensure excellence in every aspect of our operations.



EFFLUENT TREATMENT PLANT

Award Winning Treatment Plant
Capacity 1 Million Liters/day



SOLAR PANELS

Our entire factory runs on solar power.

**SOCIAL COMMITMENT**

At Extraweave it's not only business, we believe that building a better tomorrow is everyone's responsibility. Out of this social commitment our group founded the KVM Trust, a major social welfare organization.

Free school for mentally challenged children.

Swarna Speech & Hearing Diagnostic centre.

Free pain and palliative care centre.

Free counseling for families having cerebral palsy affected children.



GROW TREES INITIATIVE

Experience the epitome of luxury with a conscience through Neytt's partnership with Grow-tress. With every rug sold, Grow-trees plants a tree on behalf of the customer, seamlessly blending opulence with environmental responsibility. This collaboration transcends mere decor; it's a statement of commitment to a greener future, where luxury isn't just about aesthetics but also about making a positive impact on the planet.

Each purchase comes with a personalized certificate from Grow-tress, symbolizing the customer's contribution to global reforestation efforts. It's more than just a rug; it's a tangible reminder of one's role in nurturing the Earth. Neytt and Grow-trees invite you to join this movement towards sustainable luxury, where every adornment in your home is a testament to your dedication to preserving the beauty of our planet for generations to come.

CERTIFICATIONS

Sedex



AWARDS



DNA PARIS
DESIGN
AWARDS
2023
WINNER



DNA PARIS AWARD FOR VALLAMKALI

The Vallamkali rug, featuring the boat race in a combination of gold and green, won the prestigious DNA Paris Design Awards 2023 under the Product Design-Eco Design Category. The design not only captured the energy, rhythm and spirit, which is the essence of the boat race but also portrayed the vibrancy, beauty and serenity of Kerala, especially Alappuzha.

A red square logo with the text "EUROPEAN PRODUCT DESIGN AWARD" in white, stacked vertically.

EUROPEAN PRODUCT DESIGN AWARD 2023 FOR BIDRI

The Bidri rug inspired from the metal handicraft of Bidar won the European Product Design Award 2023. The design tries to bring a modern twist to the traditional motifs of bidriware. Once the rug is made on the jacquard loom, silver yarns are inserted on to it to pay homage to the craft.



EUROPEAN PRODUCT DESIGN AWARD 2024 FOR GILDED OASIS

Gilded Oasis is a striking wall-hanging that captures the quiet tension between drought and rain. Hand-tufted with a bold blend of Tencel, wool, and sisal, the rug brings this contrast to life through subtle textures and tonal variation. Its sculpted high and low piles evoke dry, cracked surfaces meeting the softness of new rainfall. A rare piece of craftsmanship, Gilded Oasis is a tactile expression of resilience and renewal.



NOMINATED FOR ELLE DECO INTERNATIONAL AWARD



"Vellamkali" nominated for Elle
Deco International Award 2022.



"Kasavu" nominated for Elle
Deco International Award 2019.

PROJECTS





Supplied rug to the White House for an event.

MET GALA 2022, 2023 & 2025

In the realm of high-profile events, the Met Gala stands as a beacon of glamour, creativity, and style. Each year, the Metropolitan Museum of Art in New York City transforms into a stage for fashion's most elite—and at the heart of this opulent affair lies an often-overlooked but essential element: the red carpet.

We were proud to supply the red carpet for the Met Gala in 2022, 2023, and 2025—laying the foundation, quite literally, for fashion's most photographed night.



Met Gala 2022



Met Gala 2023



Met Gala 2025



Suryagharh palace, Jaipur.



Six Sense, Ibiza.



Enchanted Island Resort, Seychelles



Taj Exotica Resort and Spa, Andamans



Soho house, Mumbai



Altitude Private Mountains, Wayanad



Saptha Resort and Spa, Wayanad



JDV by Grand Hyatt, Goa



CGH Casino, Kochi



CGH earth Saswara, Gokarna



Hilton Resort and spa, Hyderabad



The Leela Ashtamudi A Ravis Hotel, Kollam



Coconut Lagoon, Kumerakam



Yahvi, Calicut



CGH Marari, Mararikulam



AMA Plantations, Coorg



Keef Safari Lodge Kabini, Karnataka



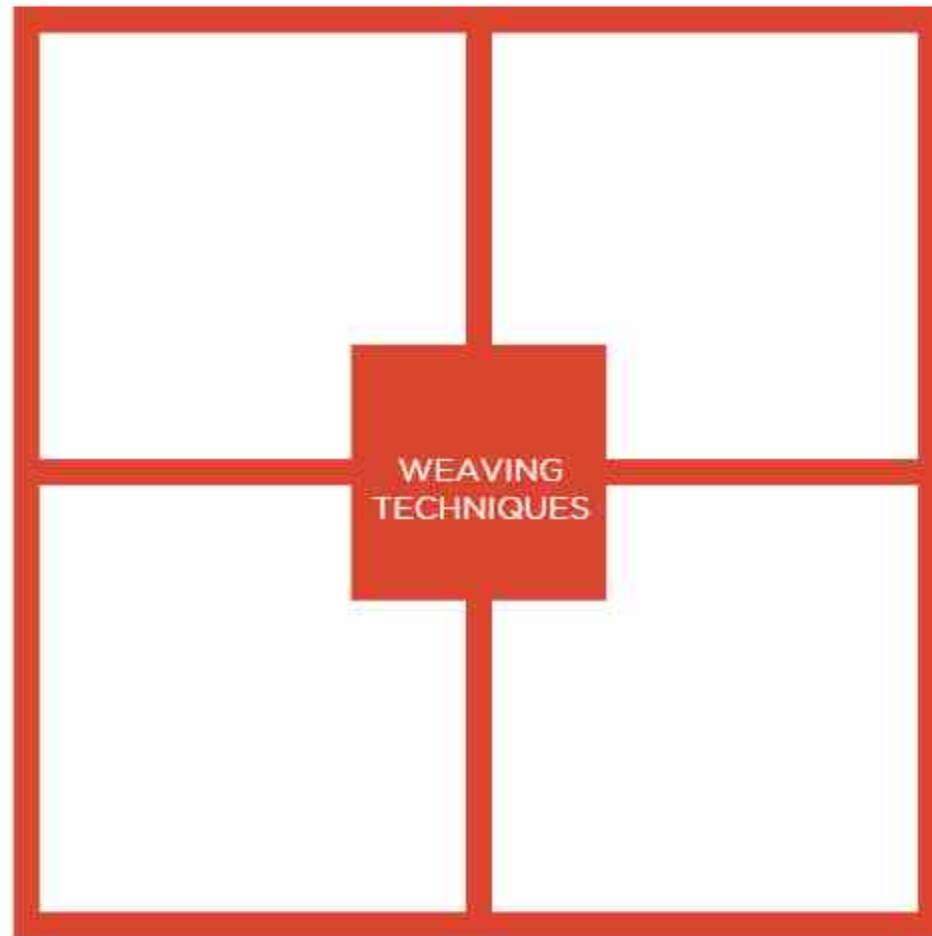
Stepati Mandalay Hall, Kochi

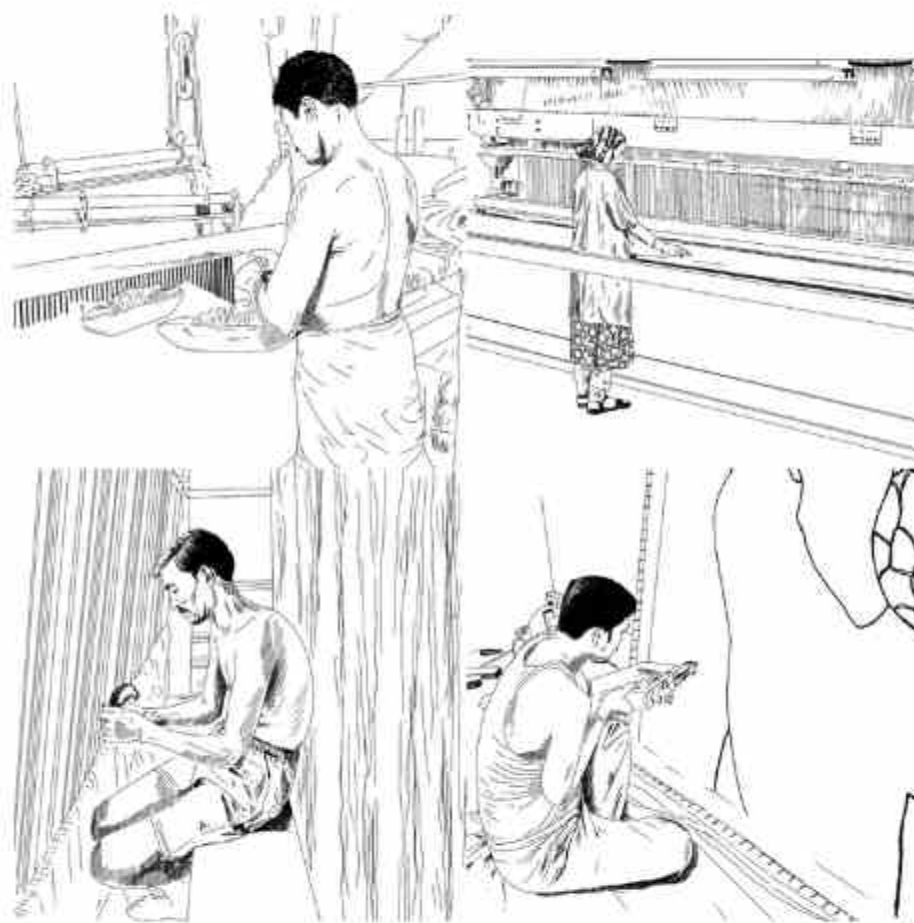


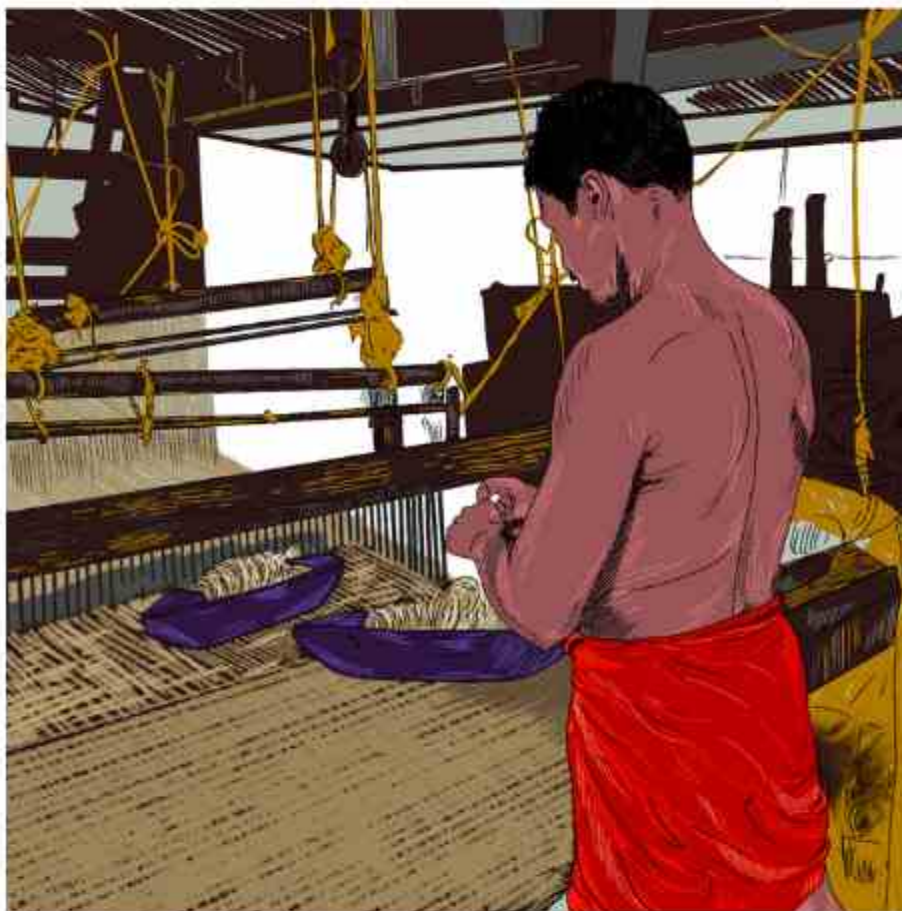
Neemrana, Tamil Nadu



Taj Madikeri, Coorg







01

HANDLOOM

HANDLOOM

Handloom weaving is a traditional technique where warp threads are stretched on a loom, and weft threads are interwoven using a shuttle and pedal. Ideal for both monotone and multi-colored designs, it creates intricate textures with loop and cut piles. This method enhances the rug's depth, sheen, and durability, resulting in soft, visually striking rugs that make timeless additions to any space, offering both beauty, craftsmanship, and a unique handmade touch.



02

POWER LOOM

POWER LOOM

A powerloom is a mechanized loom that weaves fabrics efficiently, offering precision and speed. It produces various types of textiles, including Axminster, Wilton, and Broadloom carpets, as well as flat weaves, which are tightly woven without a pile, and jacquard fabrics, known for intricate patterns created using programmed designs. Powerlooms enable large scale production while maintaining design complexity and durability.



03

HAND KNOTTED

HAND KNOTTED

The hand-knotted technique, produced on a vertical loom, includes manually weaving the strands tightly to the warp by knots. The size of the knots used is what creates the difference in the variety of the rug, while the number of knots influences the density, pattern, and sturdiness. There are various knots that weavers use to get the desirable visual effect on the rug, like Persian, Turkish, Indo-Nepal, and Sumak, each offering unique characteristics, textures, and aesthetic appeal to the final design.



04

HAND TUFTED

HAND TUFTED

Hand tufting involves manually punching yarn through fabric with a tufting gun, creating loops or piles on the surface to form a rug. This method allows for custom designs, intricate patterns, and varied textures, providing more design flexibility, faster production, and improved efficiency than traditional hand-knotting techniques, while still preserving the meticulous craftsmanship and artistic value of a handmade rug.

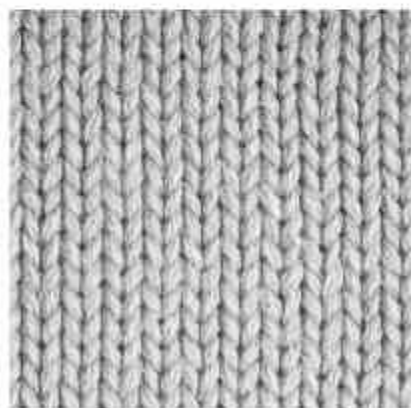
MATERIALS

SISAL	Sisal fiber, derived from the leaves of the Agave plant grown in Brazil and East Africa, is a strong, durable, creamy-white fiber valued for cordage and carpet yarns due to its length, luster, and dye affinity.
WOOL	Wool is a soft, durable, and sustainable fiber from sheep and other animals, graded by fineness and length, with finer types used for clothing and coarser ones for carpeting.
JUTE	Jute, known as the "golden fiber" for its color, is an eco-friendly and affordable vegetable fiber extracted from soaked plant stems and spun into yarns for carpets.
RECYCLED PET	Recycled polyester fiber, made from PET bottles, is a sustainable, durable, and low-maintenance alternative to natural carpets, offering superior resistance to stains, mold, and bacteria.

SISAL



WOOL



JUTE



RECYCLED PET



NGH x Salventius

As an artist who believes in The Now, Niels Kiene Salventius delves deep into the technique of minimal and bare portraiture. According to him, the moment is a 'lost art'. His process of creation is very organic, very raw, where he depends on the moment to shape his artwork rather than planning it out extensively.

Salventius uses his signature style of One Line Momentalism. This technique has been used to create his extraordinary collection of indoor rugs. Using this technique, he drew faces and characters with a single long continuous line. Since anything can shape out when the pen or marker meets the surface, every design is exclusive and without a pair in the world. The unique One Line Momentalism artform makes Salventius more modern, more urban and more relatable to the masses.



Niels Kiene Salventius

DAY BY NIGHT



Hand knotted with pure silk
Limited Edition

5.8ft x 8ft

MONO MADONNA



6ft x 8ft

MONO LISA



6ft x 8ft

CIRCLE SOUL



6ft dia

CIRCLE SOCIETY



6ft dia

CUDDLE CLOUD



6ft x 7.5ft

HAPPY HOME



6ft dia

neytt x mallie gautreau

A versatile designer with a passion for colours, Mallie Gautreau prides on her skilled mastery of textile processes, love for drawing, passion for local knowledge, great sense of palettes and curiosity for research. Her versatility enables her to monitor current trends to design textile surfaces after extensive material research on warp and weft weave, knit, jacquard and more. Besides rugs, Gautreau also works with fashion accessories like bags and scarves and furnishings like household linens.

The Neytt X Mallie collection was the subject of significant research and reflection around lines, they intersect, contrast, undulate, weave, come out and draw new shapes on the traditional carpet. Each piece in the collection has been imagined like a painting, the variations of lines in contrasting pop and playful colors personalize and give character to each room in the house.



Mallie Gautreau

BLOSSOM



Hand knotted with New Zealand wool
Limited Edition

6ft x 8ft

STRADA



6.6ft x 4.1ft

PIANO



7.2ft x 4.3ft

ONDA



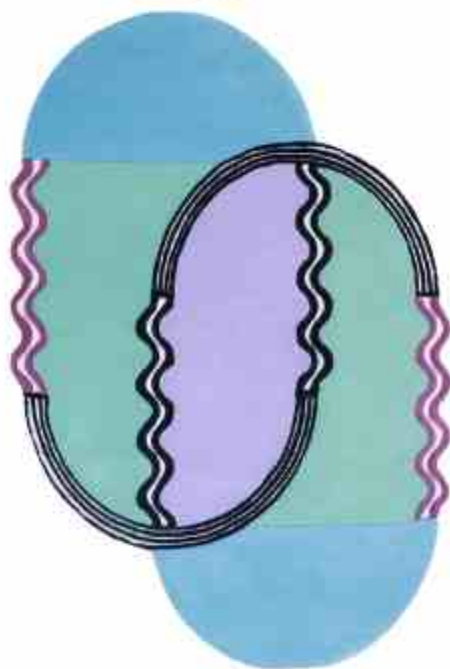
5.5ft x 5.4ft

MIRRA



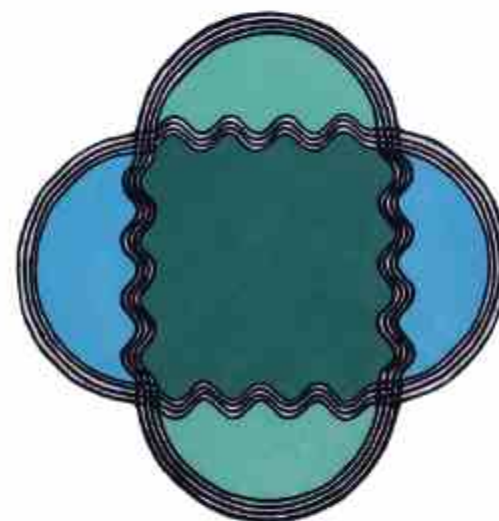
7.2ft x 4.3ft

DUO



6.6ft x 4.6ft

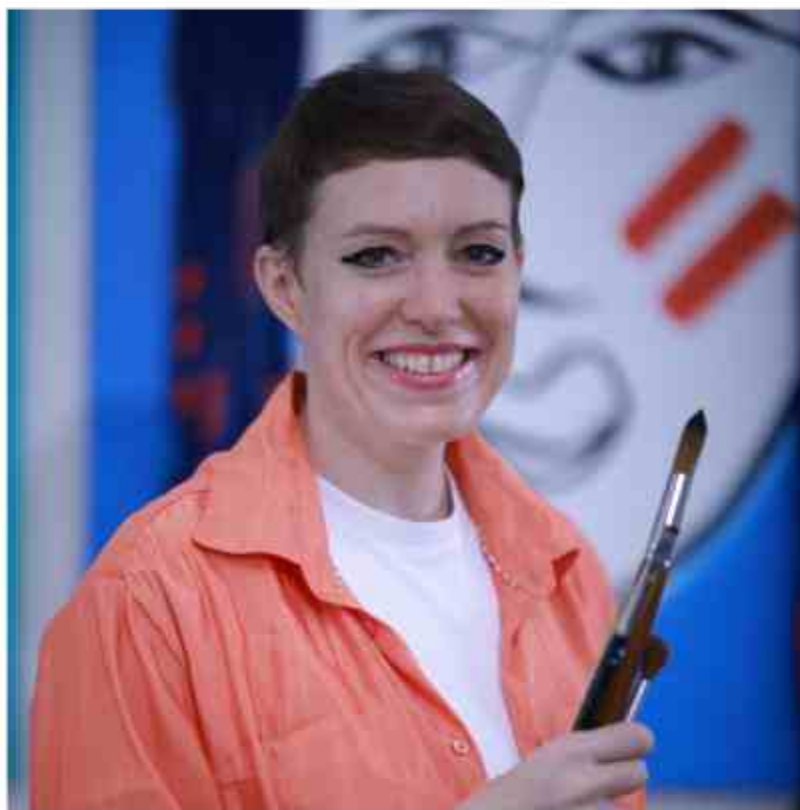
VERSO



5.2ft x 5.2ft



Breaking the stereotype of female identity as portrayed in mainstream media. In the Women Power series, Vanessa has played around the central theme of Women. Vanessa narrates that the whole concept of these portraits started with her son's storybook. A picture of a mother in traditional Indian clothing struck her because she realized she was in no way similar to her. In fact, she realized she looked more like the father. This made her think beyond the traditional concept of female beauty and embrace the diversity. Using 16 portraits from the extensive collection of 100, Vanessa has designed rugs for Neytt. Even here, she wanted to break away from the conventional idea of rugs and carpets to create something figurative, had a message and told a story. Where you see geometric, abstract patterns on rugs and carpets, Vanessa has used a collage of her quirky portraits of women.



Vanessa

FACE RUG



5ft x 8ft

UNITY RUG



7ft dia

Neytt x Palak

In a departure from conventional rug design, this collection immerses itself in the realm of fluidity, employing a soothing and subtle color palette reminiscent of watercolors. Inspired by the fragility of life, the collection draws parallels to the art of watercolor painting, renowned for its complexity and sensitivity. Just as mastering watercolors requires a delicate touch, these rugs aim to instill a profound sense of sensitivity and life-likeness into their designs, giving them a breath of their own. This collection invites one to explore the beauty of imperfection, where boundaries dissolve and colors gracefully merge, mirroring the unpredictable yet harmonious essence of existence. Each rug tells a unique story, a testament to the ephemeral nature of life, and the subtle intricacies that make it so enchanting.



Palak Modi

ENGRAINED ELEGANCE



Hand knotted with jute
and New Zealand wool
Limited Edition

6ft x 9ft

TENDER TOUCH



6ft x 9ft

PIECE BY PIECE



6ft x 9ft

HUES OF HARMONY



6ft x 9ft

BLISSFUL COEXISTENCE



6ft x 9ft



Born from the boundless imagination of Neel & Uday, this collection of hand tufted kids' rugs transforms their playful drawings into vibrant, statement pieces. Initially sketched on loose sheets, notebooks, and schoolbooks, their creatures—lizards, dragons, and whimsical reptiles—now come to life as rugs designed to spark joy in kids' spaces. Curated with the help of their mother, Vanessa, Neel & Uday's Creatures is a collection designed by kids, for kids—bold, imaginative, and full of character. These rugs invite little dreamers into a world where creativity knows no bounds, making playtime and everyday spaces even more magical. Each piece captures the raw, unfiltered joy of childhood, turning spontaneous doodles into treasured design elements that inspire curiosity and wonder.



Neel & Uday

DRAGON



5ft x 8ft

MONSTER MADNESS



4ft x 6.8 ft.

FIRE BREATHING FRILLED LIZARD



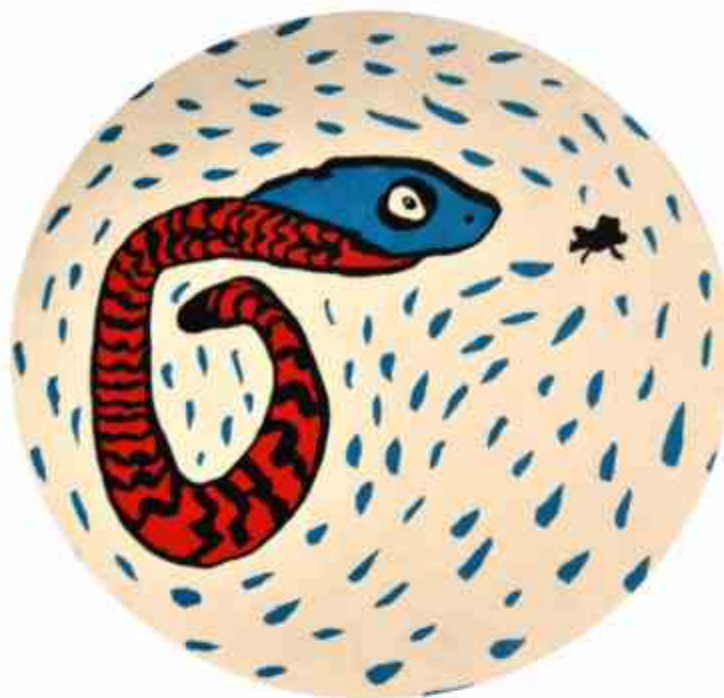
5ft x 8ft

SNAKES



6ft x 8ft

SNAKE & FLY



6ft x 6ft

NEYTT
X
BIJIN
DAVIS

Bijin's style is a combination of material explorations, minimal forms and crafting techniques. Born in Japan and raised in India, Bijin Davis' creations reflect the influence of both cultures. According to her, the interior products you choose sets the mood of the space, so it has to be something refreshing and unique each time. Taking inspiration from elemental materials like water, shadows, and more, she strives to create an enchanting experience with her products.



Bijin Davis

PINK SPLASH



Hand tufted with New Zealand wool

6.4ft x 5.5ft

ORANGE DROP



Handknotted with New Zealand wool

6ft x 5ft

neytt x SHAHUL ART.

As an artist, Shahul is constantly inspired by the rich cultural heritage of Kerala and its traditional art forms. In this contemporary painting, he aims to capture the essence of Kerala's traditional art through a bold and vibrant style. By infusing modern techniques and colors, the artist hopes to bring a fresh perspective to the traditional Kerala face portrait, while still paying homage to its roots. His goal is to create a visually striking piece that celebrates the beauty and intricacy of Kerala's art, while also showcasing Shahul's unique artistic voice.

Through this piece, we seek to honor the centuries-old artistry of Kerala while also pushing the boundaries of contemporary art. We hope to evoke a sense of nostalgia and pride in viewers while also sparking a renewed interest in Kerala's rich cultural traditions.



Shahul

VIBRANT KERALA



5ft x 9ft

neytt x

BY AREEN

Our collaboration with Areen Hassan, a Palestinian textile artist and designer based in Dubai, is rooted in a shared appreciation for the power of textiles to carry memory, identity, and meaning. Areen's work draws deeply from her heritage, using the language of carpets to explore the relationship between people and the objects that shape their cultural and spiritual worlds.

Her pieces reflect a long-standing connection to the symbolism and materiality of carpets—woven forms that, for her, evoke home, continuity, and a deep sense of belonging. Inspired by the idea of the Islamic garden, her work balances the grounded and the transcendent, capturing both the physical and emotional landscapes of her experience.



Areen

INFINITY GARDEN



5.1ft x 10ft

REVERIE WOVEN



6.6ft x 10ft

NEYTT X PRITYAANSHI AGARWAL

Prityaanshi Agarwal, a texture artist, draws inspiration from the layers and mundane materials in everyday life, weaving them into designs that blur the lines between art, architecture, and the environment. Through a meticulous process, she recreates these intricate surfaces that are not mere representations but heartfelt memories etched onto the canvas. Her work has been greatly influenced by her architectural training, as it has not only equipped her with a strong sense of composition, balance, and form but also fostered her appreciation for the raw materials that make up our environment.

This collection features six statement pieces, each capturing the delicate interplay of light, depth, and movement. More than just rugs, they are tactile memories—crafted to bring the beauty of nature's details into modern spaces, redefining how we experience texture and form. Every fiber and contour reflects the poetry of organic surfaces, inviting a closer connection to the world around us. With a balance of softness and structure, these rugs offer a sensory experience that evolves with time.



Prityaanshi Agarwal

INFINITY GARDEN



5ft x 8ft

BLOCK



5ft x 8ft

BLOOM



6ft x 6ft

SHADOWPLAY



5ft x 8ft

GRADIENT EMBERS

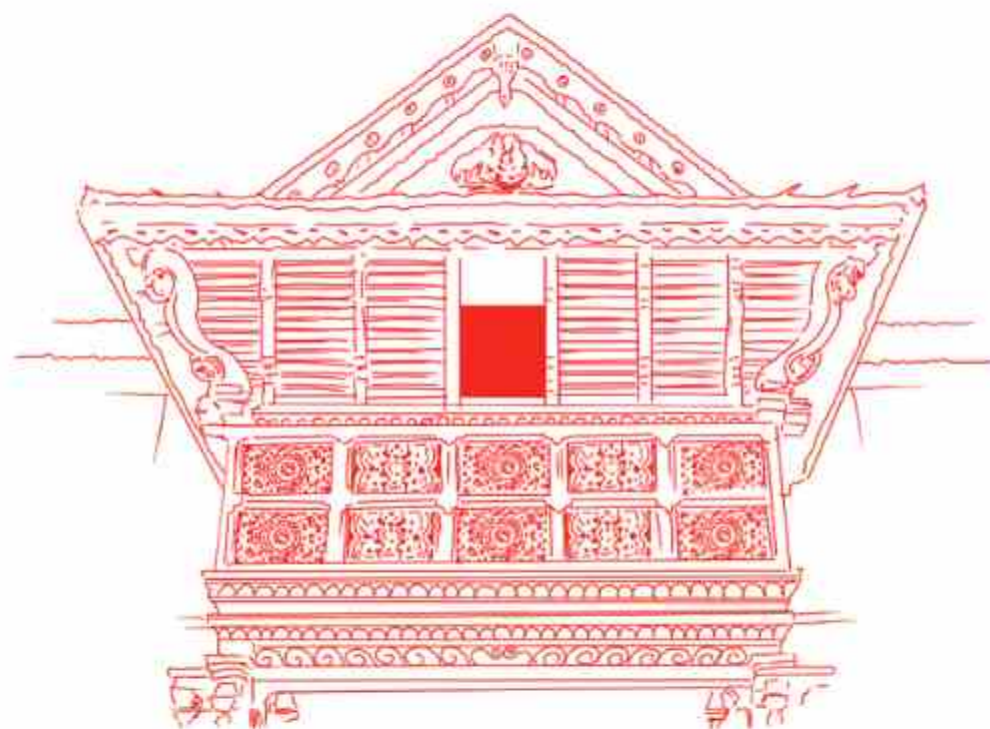


3ft x 6ft

SILENT ABYSS



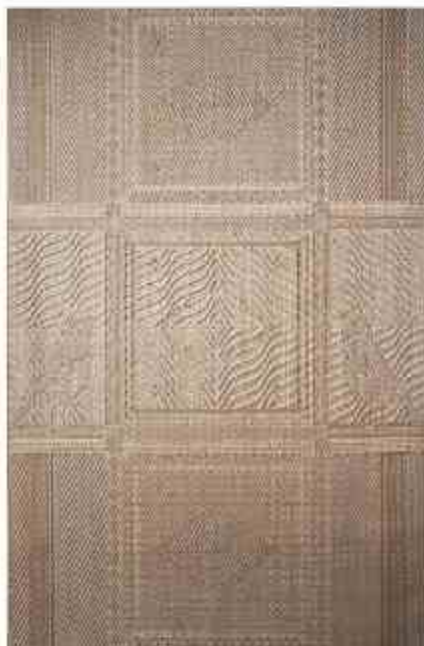
6ft x 6ft



KILIVAATHIL

An awe-inspiring voyage, driven by wonder and inspired by the celestial presence of birds that adorn both the city and the countryside. When walking through the alleys of Kerala, you notice the rooftops of ancient homes, where birds spend their leisure time. It is a serene and breathtaking setting, a reminder of Kerala's distinct blend of man and nature. You encounter wooden pillars intricately carved with highly accurate depictions of several bird species. This collection is inspired by this beautiful sight, capturing the essence of Kerala's residence in a tangible form of art, infusing it with birds and a feeling of history and tradition that speak of the very soul of Kerala.

KILIVAATHIL



6ft x 9ft

MUTTAM



6ft x 9ft

NEDUMTHOONU



6ft x 9ft

KAAVALKAR



6ft x 9ft

KILIKKODU



6ft x 9ft

UTHARAM



6ft x 9ft

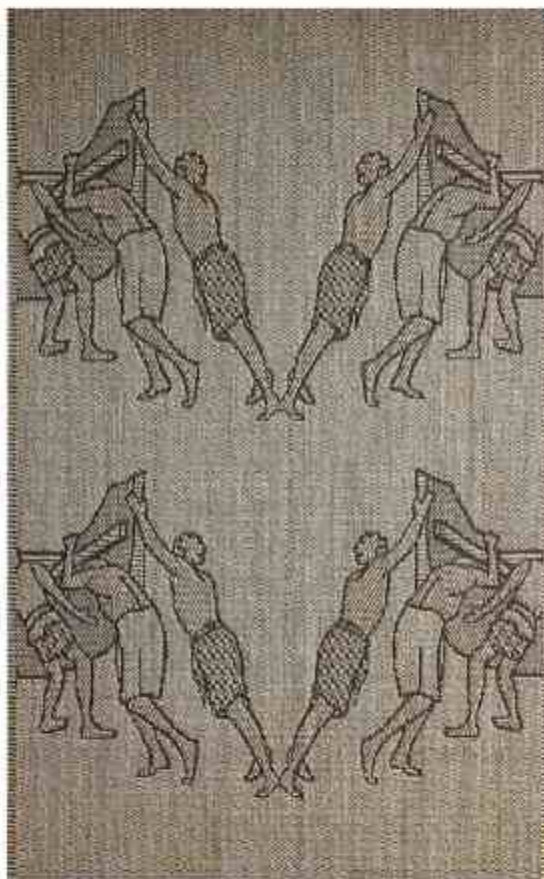


VALA

Vala; Weaving Tales of Kerala's Fisherfolk

This collection is a tribute to the resilience and spirit of Kerala's fishermen, depicted through a collection of Jacquard woven rugs. These rugs unravel the enigmatic saga of the unsung heroes of the sea, whose lives intertwine with the rhythm of the ocean. Each intricate weave pays homage to their timeless connection to the sea, showcasing their toil, perseverance, and unwavering spirit. As you run your fingers across the patterns of each rug, you'll feel the pulse of the sea and the simplicity of their existence. Vala is more than just a collection, it's a symphony of storytelling, celebrating the beauty found in lives nourished by tradition and woven into Kerala's coastal heritage.

ORUMA



4ft x 6ft.

ARAYAN



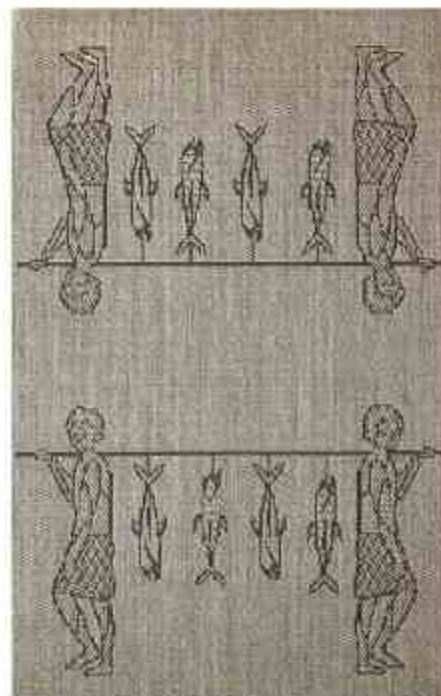
6ft x 9ft

THIRA



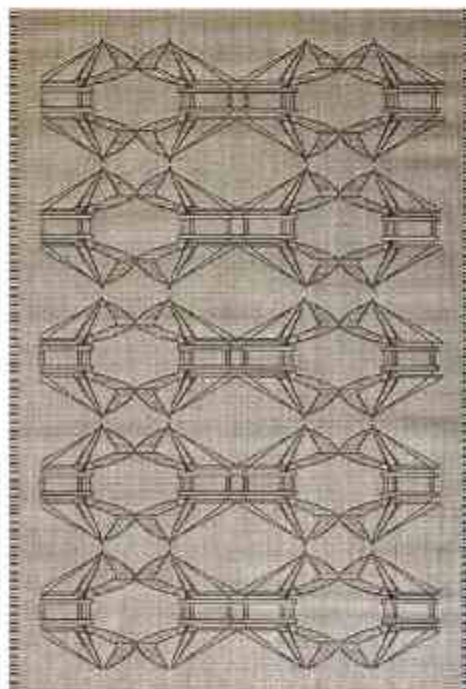
6ft x 9ft

CHAAKARA



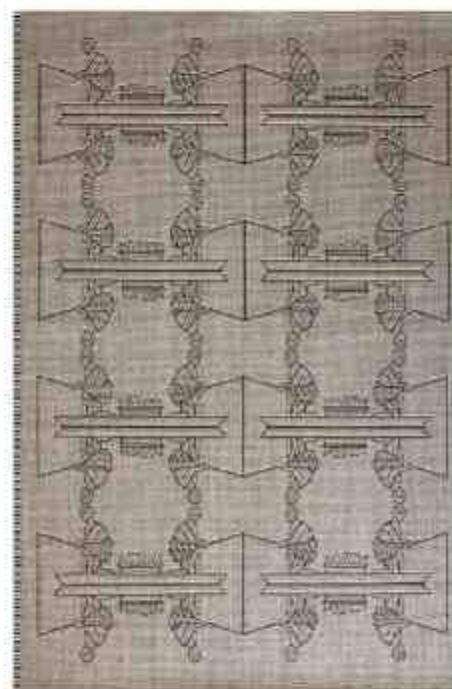
4ft x 6ft

CHEENAVALA



6ft x 9ft

CHOONDA



6ft x 9ft

KARA

Among the vibrant cultural heritage of Kerala, the signature 'Kara' of the mundu and saree stands as a symbol of grace and celebration. These traditional garments adorned with thick and thin stripes on a base of pure white cotton embody a harmony and balance that has been cherished for generations. Each piece is a play of bold and subtle lines that characterize the signature 'Kara' of the mundu and saree. The pure white cotton base has been depicted by our solid white sisal as both are plant based fibers it only seems fitting. The collection is designed to bring a touch of festivity into your home. Made completely by hand, these rugs also stand as a testament to Kerala's handloom traditions.

CHINGAM - THE KASAVU RUG

Kasavu, with its golden allure, is an integral part of every celebration in Kerala, embodying the essence of the region's rich cultural heritage. The Chingam rug captures this timeless elegance by incorporating the luxurious Kasavu yarns, enhancing its beauty with a touch of traditional opulence. Hand-spun with care, these golden threads create a stunning texture that reflects light perfectly, adding a luminous glow to any space. Whether it's a festival, wedding, or a special occasion, this rug brings the charm of Kerala's cherished traditions into your home making every moment feel like a celebration.

5ft x 8ft

EDAVAM



5ft x 8ft

MIDHUNAM



5ft x 8ft

DHANU



5ft x 8ft

MEENAM



5ft x 8ft

MAKARAM

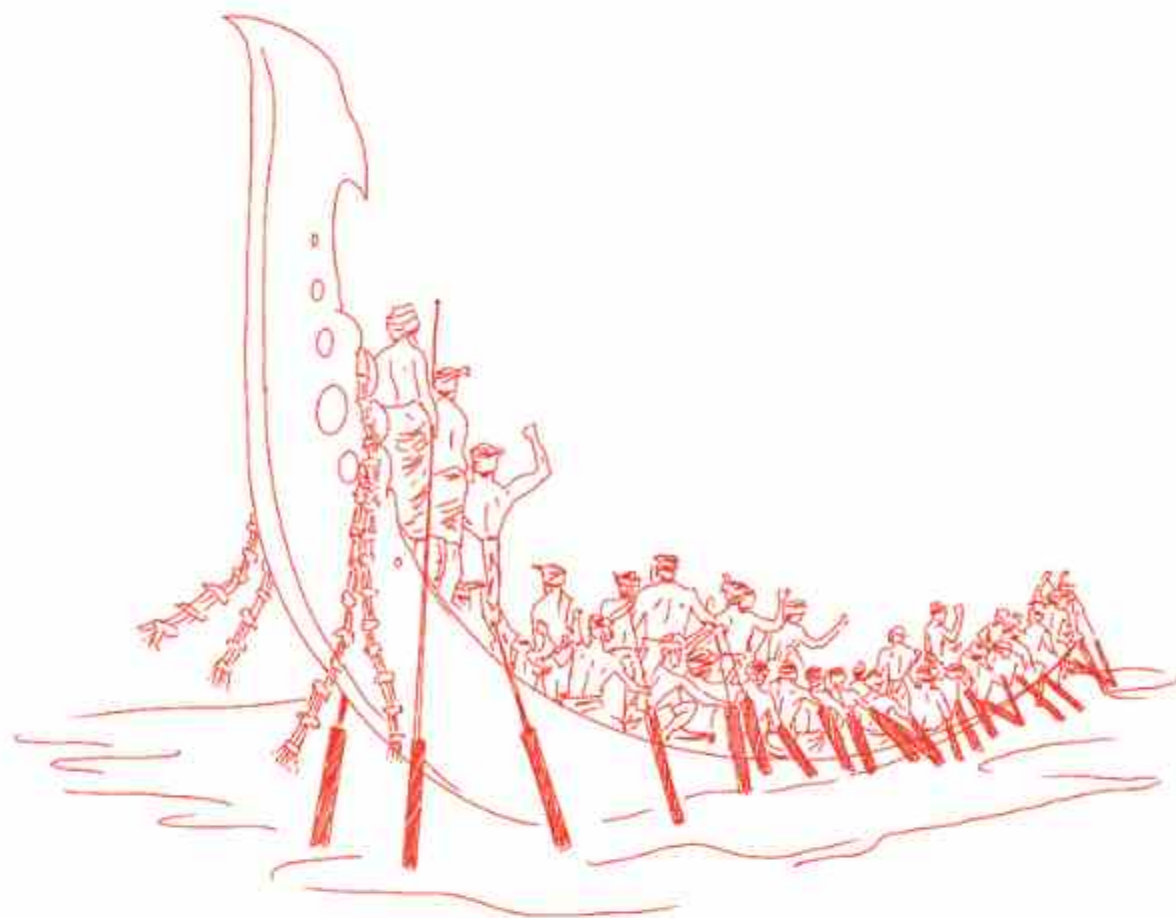


5ft x 8ft

MEDAM



5ft x 8ft



VALLAMKALI

Alleppey, where Neytt is born, is a town with canals, backwaters, beaches, and lagoons. It was described by George Curzon, Viceroy of India at the start of the 20th century, as the "Venice of the East." This mesmerizing landscape is also famous for being the birthplace of Kerala's famous boat race, Vallamkali. The Vallamkali rug collection draws on the essence of this boat race infused with energy, rhythm and spirit. It celebrates the mesmeric synchronisation of the rowers with its charming play of green and gold.

The green in our rug represents Kerala's lush greenery, the tranquilly of its paddy fields and palm trees. The gold woven deeply into the rug's fabric represents Kerala's cultural and historical roots. Gold is an essential part of every Keralite's life and no occasion in the state feels complete without it.

VALLAMKALI



6ft x 9ft

PANKAYAM



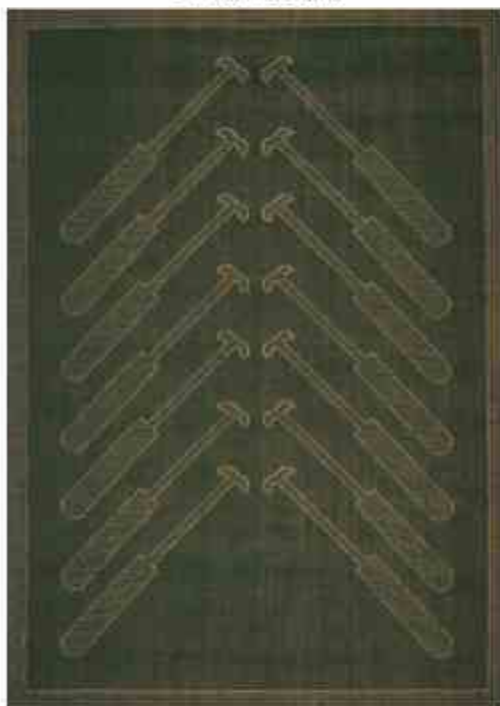
6ft x 9ft

KALIYODAM



6ft x 9ft

OTTATHUZA



6ft x 9ft

NETTIPATTAM

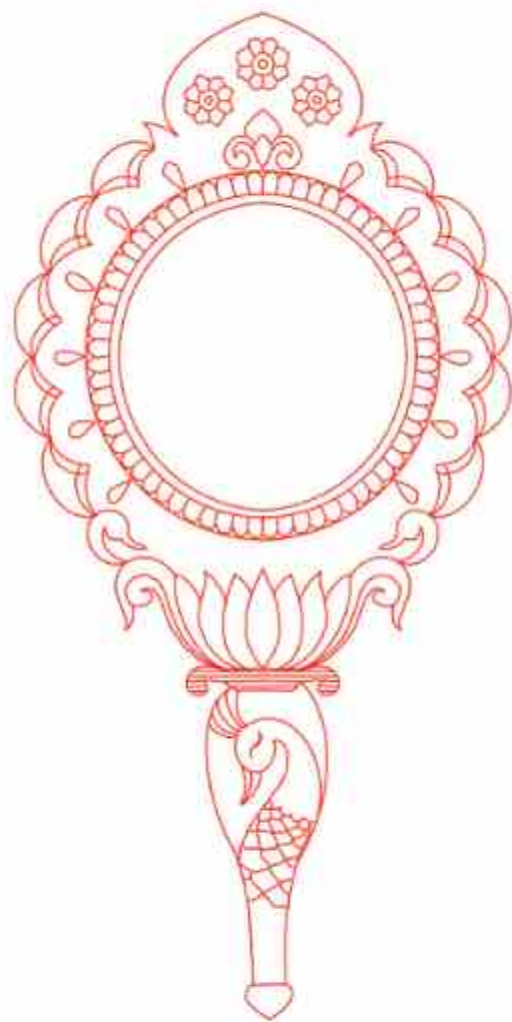


6ft x 9ft

AMARACHAARTHU



5.7ft x 5.7ft



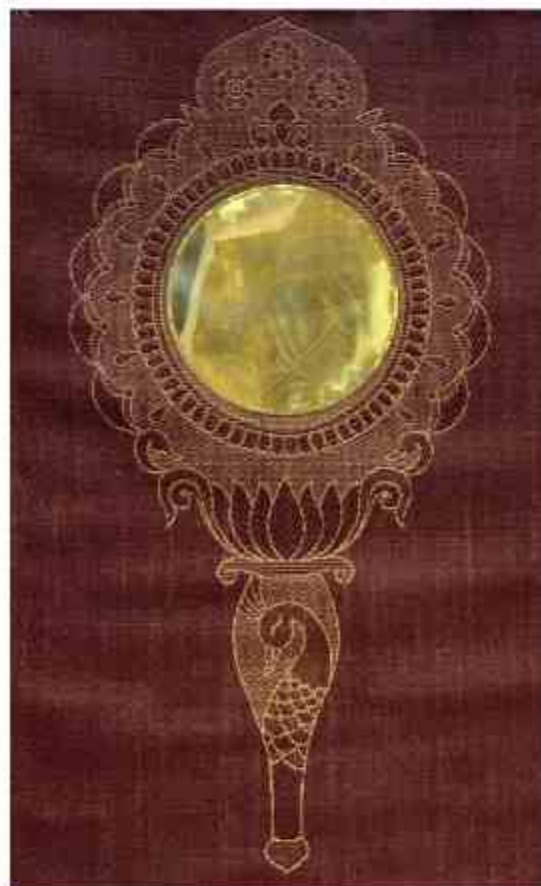
ARANMULA KANNADI

Aranmula Kannadi is a collection of art born from the harmonious union of craftsmanship. Immersed in the essence of our homeland and heritage, Neytt has crafted a masterpiece that not only honours craftsmanship but also weaves a captivating tale of Kerala's splendor.

The Aranmula Kannadi is an essential symbol of Kerala's crafting tradition. Taking inspiration from this symbol, we have developed the design to celebrate the culture and tradition that surrounds the creation of the mirror.

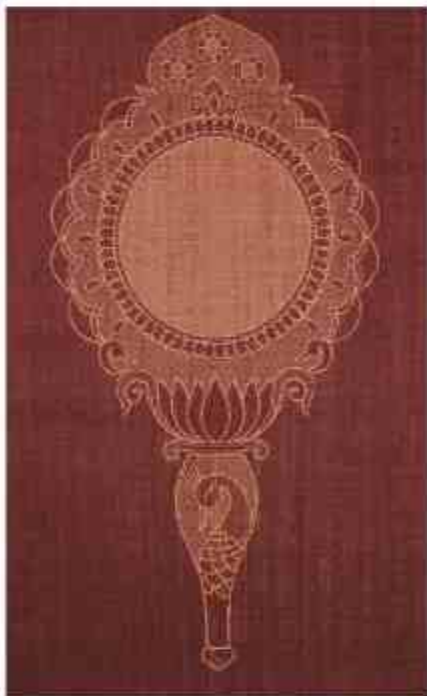
The colors deep maroon and subtle gold represent the craftsmanship and materials used to make the mirror. They help to create a divine blend of mysticism and metallurgy. The weaves are specifically designed to represent metal frames.

ARANMULA KANNADI (with mirror)



5ft x 8ft

ARANMULA KANNADI



5ft x 8ft

DHARPANA



6ft x 9ft

KAVAADAM



5ft x 8ft

DHARPANA



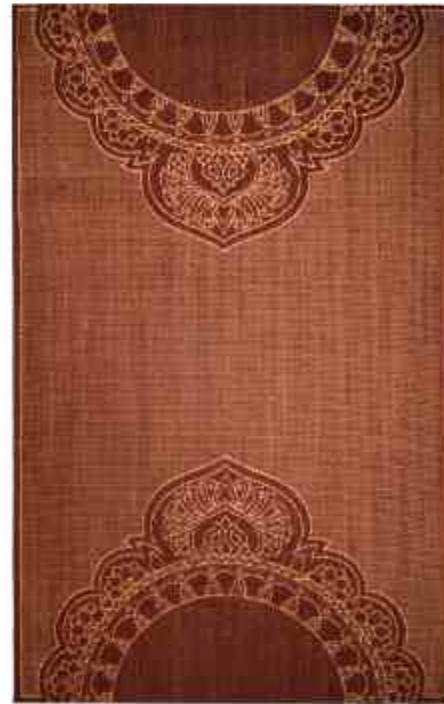
5ft x 8ft

RAJAANGANAM

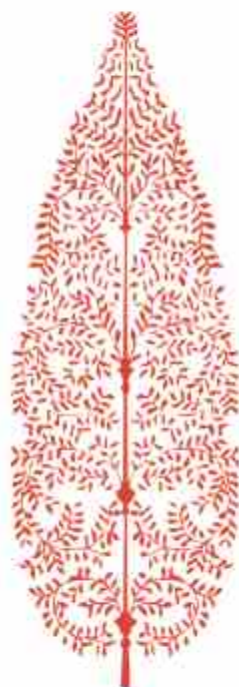


6ft x 9ft

KIREEDAM



6ft x 9ft



BIDRI

In the world of craftsmanship, there are few traditions as captivating and enduring as the art of Bidriware. This ancient metalwork technique, hailing from Bidar, India, has long enchanted artisans and connoisseurs alike with its intricate patterns and exquisite detailing. Drawing inspiration from this timeless craft, we proudly present our creation Bidri. A collective of intricate and elegant designs brings together the rich heritage of Bidriware and the contemporary allure of sisal to adorn your living spaces with unmatched elegance. We have introduced a modern twist to the intricate motifs of Bidriware with the rustic charm of sisal, resulting in rugs that are both visually stunning and ecologically conscious.

AFTABI (with silver inserted)



6ft x 9ft

MAHI (with silver inserted)



6ft x 9ft

SURAHİ



5ft x 8ft

TARKASHI



6ft x 9ft

TAINISHAN



4.7ft x 7.5 ft

ZARNISHAN



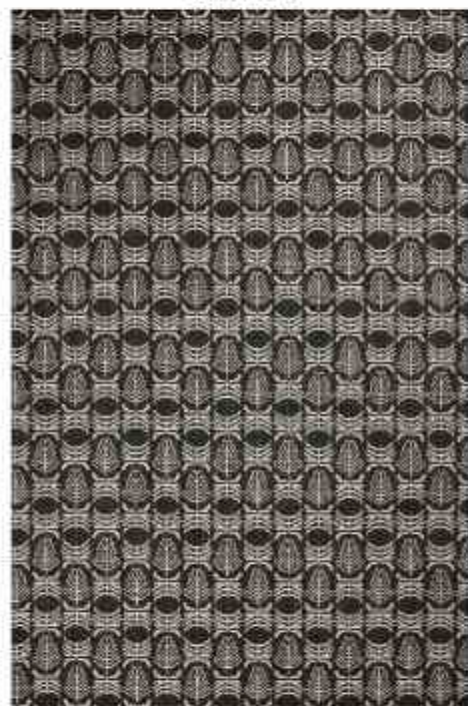
6ft x 9ft

ZARBULAND

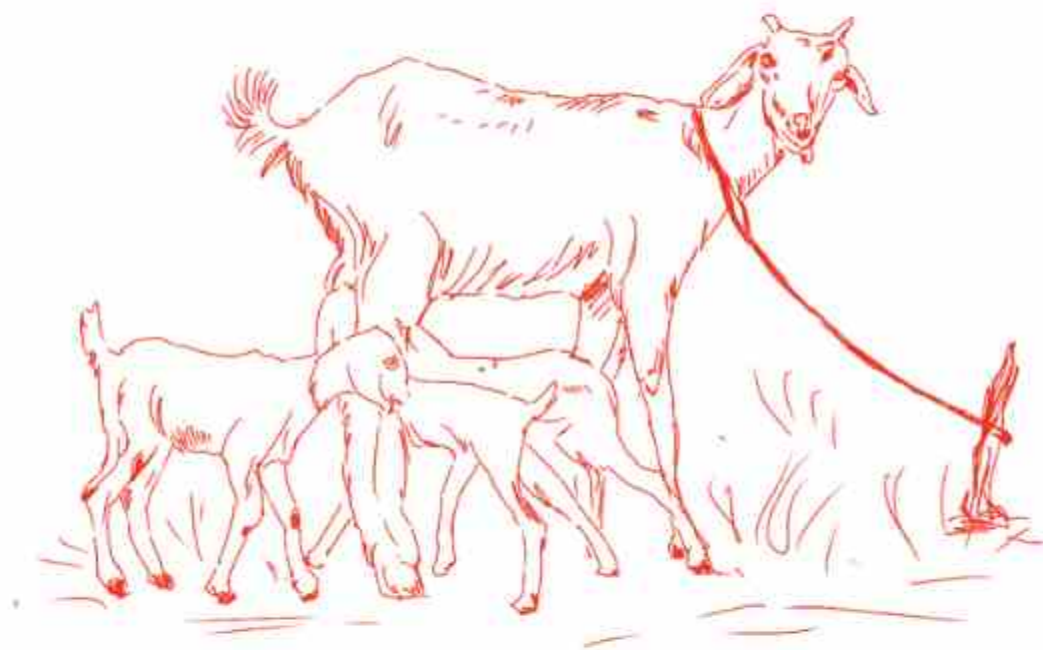


4.7ft x 9ft

MEHTABI



6ft x 9ft



AADU

Fort Kochi in Kerala is famous for many things the dutch architecture, antique gift shops, the beach, the Muziris Biennale, and cafe aesthetics. There is one constant throughout the streets of Kochi, something that exists as a part of the beautiful aesthetic of the city, is its goats. They are unbothered by foreign visitors as long as there are greens to munch on and roads and traffic to stroll in.

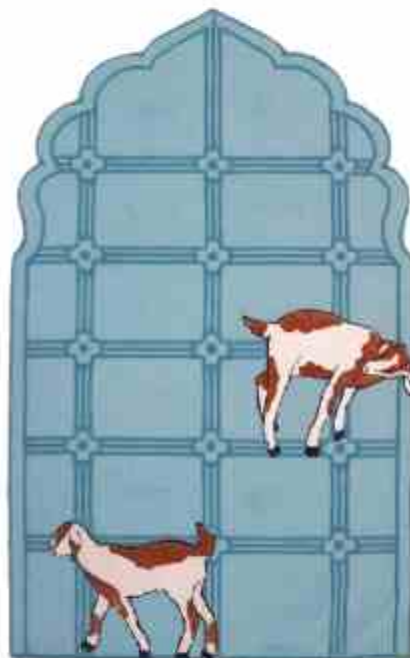
Our latest design collection "aadu" features how Fort Kochi takes in the goats as its own, merging with the blue door aesthetic of the streets and becoming one with the city. Made using the softest materials wool and bamboo silk, it is entirely hand tufted by creating high and low elevations to the rug. The colour palette predominantly depicts the dusty shades of the doors in Kochi.

SYNAGOGUE



5ft x 8ft

JEW TOWN



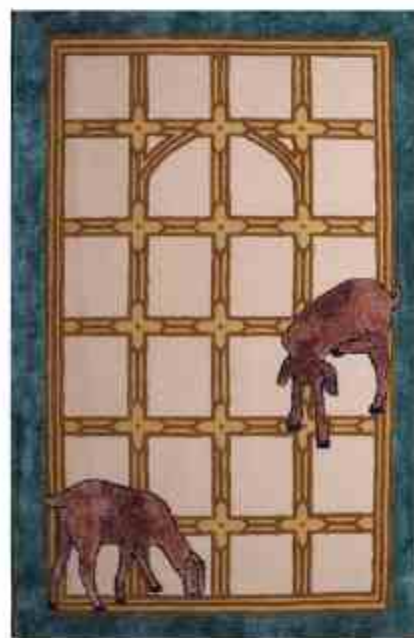
5ft x 8ft

PRINCESS ST



5ft x 8ft

SPICE BAZAAR



5ft x 8ft



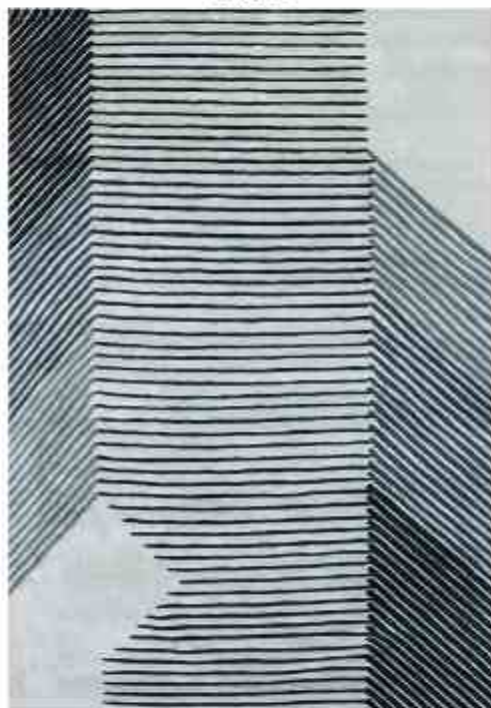
HORIZON

"Horizon" is a collection of rugs crafted with exquisite Bamboo silk and wool blend. Designed with simplicity and versatility in mind, these rugs effortlessly merge with any space, offering a seamless addition to your home décor.

Just like the sturdy foundations of skyline buildings, these rugs symbolize resilience and strength, mirroring the unwavering determination needed to pursue our dreams. Each rug is a testament to the importance of every step taken towards our goals, with a foundation as durable as the mind and soul driving us forward.

Inspired by the boundless expanse of the sky, the Horizon collection captures the serene beauty of the blue hues, adding a touch of vibrancy to your bustling life. With its timeless designs and durable construction, this collection invites you to reach for the stars while grounding yourself in comfort and style.

AISLE



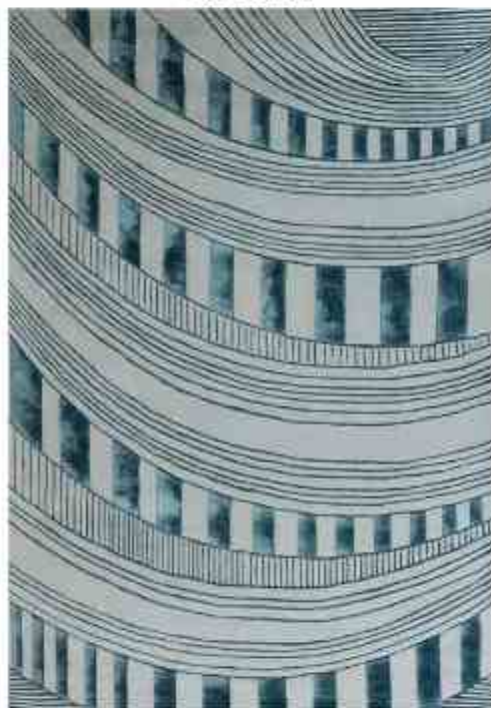
6ft x 9ft

CADRE



6ft x 9ft

CRESCENT



6ft x 9ft

ORB



6ft x 9ft

SAIL



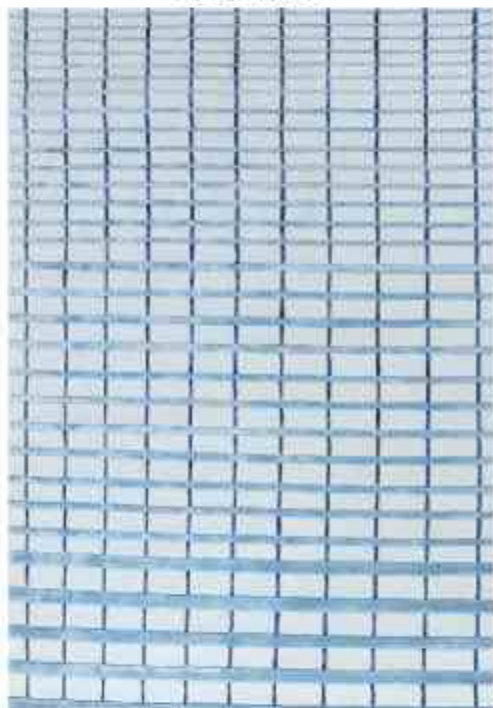
6ft x 9ft

SKEW



6ft x 9ft

SPECTRUM



6ft x 9ft

STREAM



6ft x 9ft

ROPE MATS

Rope mats (Kambi Carpets) are heavy-duty doormats crafted in collaboration with the skilled artisans of Kalavamkodam, Cherthala, Kerala. Each mat is meticulously handcrafted on wooden frames with sisal, wool yarns spun, dyed and woven into intricate patterns. The edges are then secured and the fibers are carefully trimmed to create a polished, seamless finish.



45cm x 25cm



45cm x 25cm



45cm x 75cm



45cm x 75cm



45cm x 25cm



45cm x 25cm

CHROMA

Luxury Meets Playfulness. The Chroma Collection is a UV Light Reactive Carpet Collection, designed to infuse your environment with a sense of enchantment. Crafted for those who appreciate the finer things in life, Chroma rugs are an invitation to experience the magic of color transformation. With a simple touch of sunlight or UV light, watch as your carpet comes alive, dancing with a kaleidoscope of vibrant hues that evoke a sense of whimsy and wonder.

ARINNA



4ft x 6ft

HATHOR



4ft x 6ft

THEIA



4ft x 6ft

LABYRINTH



5.5ft x 4ft

ENIGMA



5.5ft x 4ft

PAISLEY

The Paisley Collection is a celebration of timeless design reimagined for the modern home. For centuries, the paisley motif has graced textiles, symbolizing heritage, elegance and intricate craftsmanship. But what happens when tradition embraces a contemporary twist? This collection answers that question with bold creativity and fresh perspective.

Each design begins with the iconic paisley silhouette, paying homage to its rich cultural roots. Within its familiar curves, playful explorations of lines, shapes, and colors transform it into something entirely new. Geometric precision meets organic fluidity resulting in a harmonious blend of simplicity and sophistication. With a versatile palette ranging from vibrant tones to calming neutrals, the Paisley Collection effortlessly complements a variety of spaces. The result is a series of designs that feel both modern and timeless, perfect for making a bold statement or adding a subtle touch of charm.

WHORL



6ft x 6ft

INTERTWINED



6ft x 6ft

FLOW



6ft x 6ft

GRID



5ft x 6ft

MOSAIC



5.4ft x 6ft

OMBRE

Blurring the lines between color and form, the Ombre Collection embraces the beauty of gradual transitions. Inspired by shifting light, overlapping shapes, and quiet reflections, these hand-tufted rugs capture a delicate balance between movement and stillness. Soft gradients and fluid compositions evoke depth and warmth, making each piece a statement of subtle elegance.

Crafted from 100% premium New Zealand wool, the collection highlights refined craftsmanship and timeless design bringing harmony, sophistication, and a serene ambiance to contemporary spaces.

HORIZON



4ft x 6ft

STACK



4ft x 5ft

MIRAGE



4ft x 6ft

GAZE



4ft x 5ft

ECLIPSE



4ft x 6ft

STACK



4ft x 5ft

INDIGO WEAVES

The Indigo Weave Collection is a celebration of texture, artistry, and craftsmanship. Woven from sisal, dyed in deep, rich indigo and meticulously crafted using the jacquard weaving technique, this collection embraces a harmonious blend of geometric precision and organic fluidity.

From structured grids to flowing curves, from intricate interlocks to freeform textures, each design is a reflection of both order and spontaneity just like the world around us. Whether inspired by nature's gentle rhythms, architectural balance, or artisanal weaving traditions, these patterns transform spaces with depth, movement and timeless sophistication.

UTSAVAM



6ft x 9ft

VINTAGE BOWS



5ft x 8ft

TRIBAL MAZE



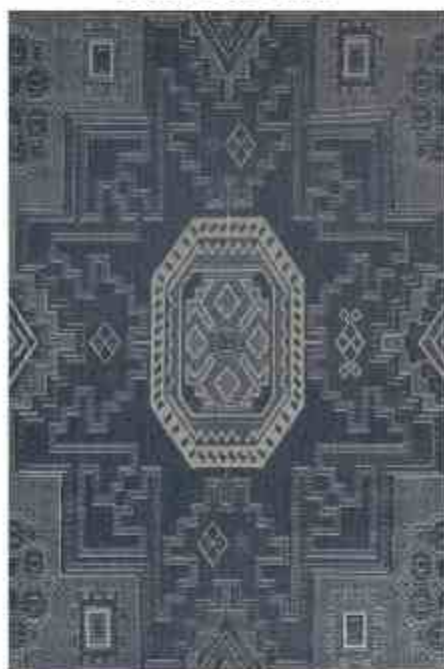
6ft x 9ft

TITAN GRID



8ft x 10ft

GEOMETRIC BLUE



6ft x 9ft

SEA NETTLE



6ft x 9ft

TIDAL DRIFT



6ft x 9ft

CHECKERED ILLUSION



6ft x 9ft

FLOOD RUG W/O KASAVU



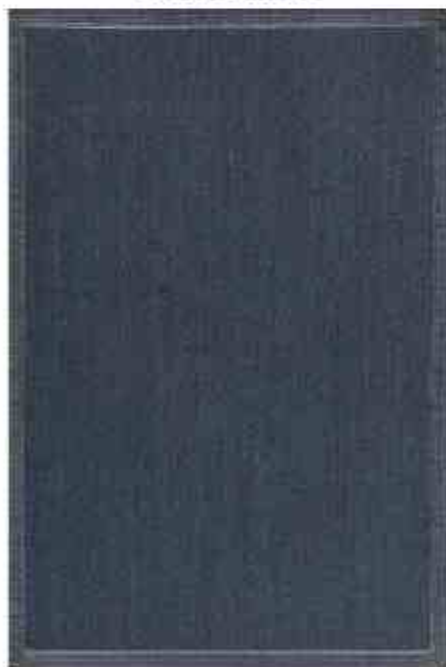
5ft x 8ft

FAULT LINE



5ft x 8.5ft

INDIGO RIDGE



5ft x 8ft
8 ft x 10 ft

INDIGO NOIR



5ft x 8ft
8 ft x 10 ft

OBSIDIAN



5ft x 8ft
8 ft x 10 ft

DIAMOND X



5ft x 8ft
8 ft x 10 ft

FISHTAIL



5 ft x 8 ft
8 ft x 10 ft
6 ft x 9 ft

CLOVER



6 ft x 9 ft

ECHO MIST



6 ft x 9 ft

MODERN TRIBAL



6 ft x 9 ft

ZARNISHAN INDIGO



6 ft x 9 ft

CRISSCROSS



2 ft x 15 ft
5 ft x 9 ft

TIDAL



8 ft x 10 ft
6 ft x 9 ft

PHULKARI



8 ft x 10 ft

IKAT



6 ft x 9 ft

TIFF



8 ft x 10 ft
6 ft x 9 ft

CIRCUIT



6 ft x 9 ft

TRACKS



8 ft x 10 ft
6 ft x 9 ft

DUNE

Inspired by shifting sands, Dune blends organic textures with intricate jacquard weaves. Handwoven from sustainably sourced jute, each rug features subtle tonal variations and geometric patterns, evoking natural landscapes. The rich texture and earthy elegance make it perfect for contemporary and coastal spaces. Durable, timeless and effortlessly refined, Dune brings warmth and depth to any interior.

DOODLE FLOW



6ft x 9ft

TWILIGHT



6ft x 9ft
8ft x 10ft

ZIG ZAG ECHO



5ft x 8ft
6ft x 9ft
8ft x 10ft

ZENITH



5ft x 8ft
6ft x 9ft
8ft x 10ft

ASHWOOD



8ft x 10ft

DUNE CREST



6ft x 9ft
8ft x 10ft

ARROWFLOW



5ft x 8ft
6ft x 9ft
8ft x 10ft

HEXALINK



6ft x 9ft
8ft x 10ft

BLACK PANAMA



6ft x 9ft
8ft x 10ft

OPTIC GRID



6ft x 9ft
8ft x 10ft

OLA KALIPPATTAM

Inspired by childhoods spent in Kerala, the Ola Kalippattam collection looks back at the simple joy of toys made from coconut leaves. These designs celebrate the joy of play and the delicate artistry of everyday life, where memories were made with nothing more than nature and nimble hands. Stripes and textures take shape from the natural form of the leaf itself, echoing its folds and rhythm.

PATTAM POLE



6ft x 9ft

PAMBARAM



6ft x 9ft

THARANGAM



6ft x 9ft

OLAMALA



6ft x 9ft

POOKKALAM



6ft x 9ft

KAATTADI



6ft x 9ft

POOKKALAM



6ft x 9ft

KALAMKARI

Inspired by Kalamkari artistry, this collection of 100% natural sisal rugs blends traditional textile crafts with modern interiors. Traditionally hand-drawn on fabric, Kalamkari's flowing motifs and delicate florals are reimagined here in woven form. The rugs carry earthy tones of beige and brown, echoing the natural dyes and grounded palettes of the original art. Each piece becomes more than a surface—it becomes a continuation of a storytelling tradition, blending heritage with the rhythm of contemporary interiors. Crafted in 100% sisal, the collection speaks to sustainability as much as it does to history, offering rugs that are both timeless in spirit and mindful in living.

MATHSYA



6ft x 9ft

TOTA



6ft x 9ft

MOGGA



6ft x 9ft

TIGALU



6ft x 9ft

REKULU



6ft x 9ft

VANAMU



6ft x 9ft

ALCHEMY

Alchemy is a collection of hand-knotted rugs inspired by raw elements—sun-scorched deserts, glistening waters, windswept snows, and ancient earth—each design is an abstract interpretation of the natural world. Soft transitions in colour and texture reflect the quiet beauty of shifting landscapes, with every piece embodying a sense of depth, movement, and nuance. These rugs are the result of a meticulous weaving process, where material choices and knotting techniques reveal subtle variations that make each one unique.

LAGOON



6ft x 12ft

SUNDOWN



8.11 ft x 12.4 ft

AFTER GLOW



9 ft x 12.3 ft

TESSELATION



9ft x 12ft

MEADOW



9.1 ft x 12.5 ft

OASIS



8 ft x 10 ft

DESERT MEMORY



8ft x 10ft

MORNING MIST



8ft x 10ft

EROSION



8ft x 10ft

TRACES



8ft x 10ft

AMBERLOOM



8.3 ft x 9.10 ft

WOVEN AQUA



8ft x 10ft

SUNSET MIST



7.11 ft x 10.4 ft

PETAL DUST



8ft x 9.10 ft

WHISPERING VINES



8ft x 10ft

DESERT MIRAGE



8ft x 10.2 ft

OXIDE BLOOM



8ft x 10.2ft

FROSTED TERRAIN



8ft x 10ft

SIENNA



8ft x 10ft

GOLDEN HORIZON



8ft x 10ft

ASHFALL



8ft x 10ft

SPILL



8.10 ft x 12 ft

NISHAT



4ft x 6ft

SOLAR SCRIPT



8ft x 10ft

BURNT RUST



4ft x 6ft

DELTA



7.11 ft x 7.11 ft



Website: www.neytt.com

Store address: Neytt Homes, 356/357,
Sultanpur MG Road, New Delhi

Phone: +91 99956 49388

Instagram: [neytt.extraweave](https://www.instagram.com/neytt.extraweave)

Email: inquiry@neytt.com